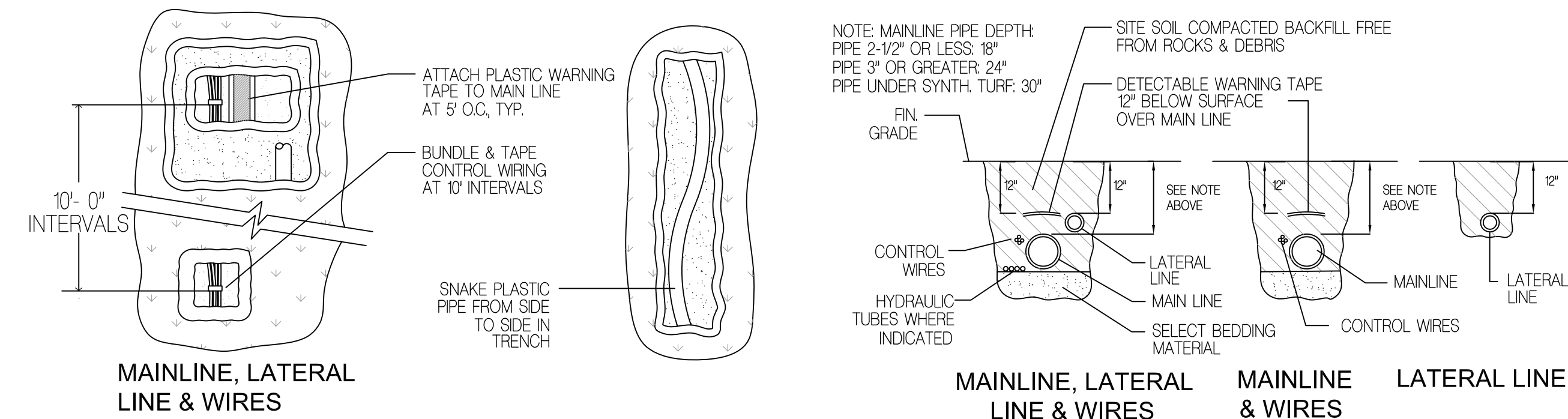


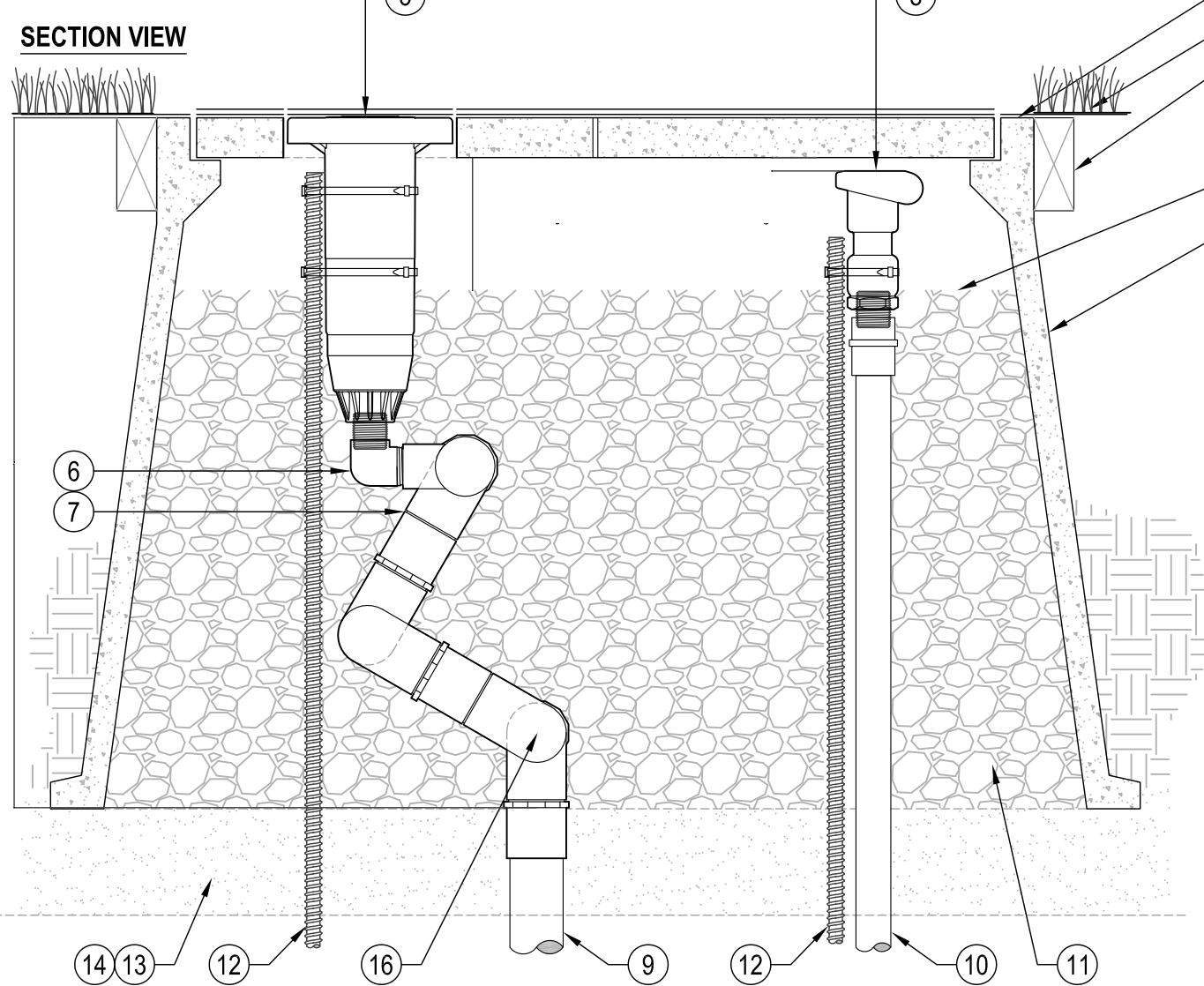
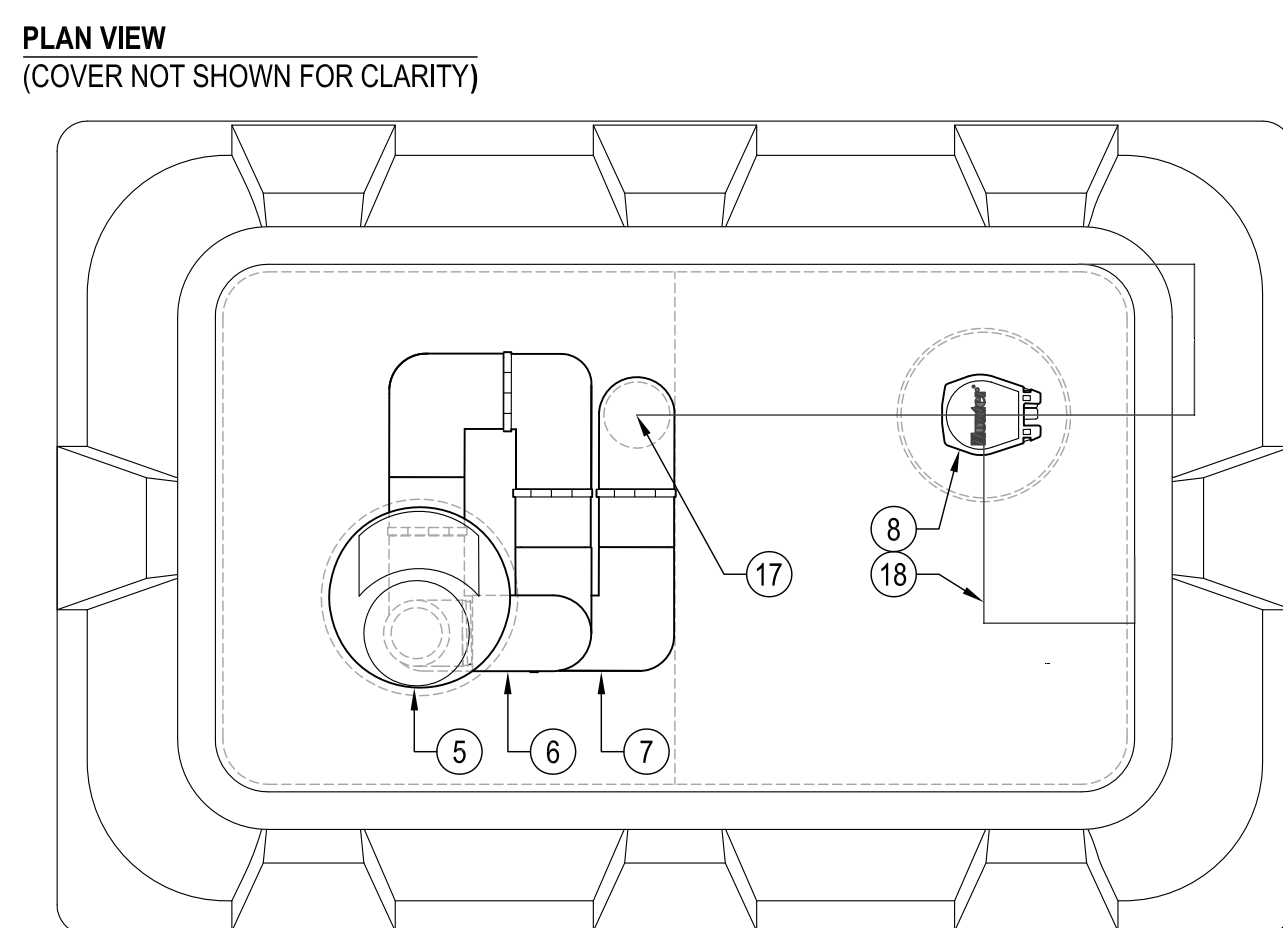
PLAN NOTES:

- INDICATES EXISTING CONTROL VALVE TO BE REPLACED AND/OR RELOCATED
- EX INDICATES AREA OF EXISTING CONTROL ZONE SERVED BY REPLACED VALVE
- APPROXIMATE LOCATION OF TRANSITE LINE TO ABATED. ABATE ALL ENCOUNTERED TRANSITE LINE. REFER TO PROJECT ABATEMENT SPECIFICATIONS, FOR ABATEMENT REQUIREMENTS.
- POINT OF CONNECTION FOR NEW 6" HIGH PRESSURE PVC MAIN LINE PROVIDING CONTINUATION OF SERVICE TO BASEBALL FIELD AND AREAS BEYOND PROJECT PROVIDE BEFORE ANY IRRIGATION DEMOLITION TO MAINTAIN CONTINUOUS IRRIGATION FOR AREAS OUTSIDE OF PROJECT
- POINT OF CONNECTION FOR CONTROL WIRES FROM EX CONTROLLER - VERIFY. CONTROL WIRES TO BASEBALL FIELD MUST BE REROUTED THROUGH PROJECT AS NOTED.
- DISREGARD ANY ENCOUNTERED HYDRAULIC CONTROL LINES AROUND FOOTBALL FIELD. HYDRAULIC CONTROL SYSTEM HAS BEEN ABANDONED AND IS NOT IN USE.
- NEW 4" HIGH PRESSURE PVC LINE AND SENSOR WIRE AND SLEEVE FROM PUMP TO POINT OF FUTURE CONNECTION TO SERVE FUTURE SYNTHETIC TURF BASEBALL FIELD COOL-DOWN SYSTEM
- NEW COACHES SWITCH CONTROLLER FOR FIELD COOL-DOWN
- NEW LANDSCAPE IRRIGATION TIMER/CONTROLLER FOR ALL EXISTING LANDSCAPING AROUND FOOTBALL FIELD.
- FLOW SENSOR CABLE AND MASTER VALVE CONTROL WIRES TO/FROM FOOTBALL FIELD COACHES SWITCH BY HOME FIELD HOUSE
- FLOW SENSOR CABLE AND MASTER VALVE CONTROL WIRES IN SPLICE BOX BY BASEBALL FIELD
- FLOW SENSOR CABLE AND MASTER VALVE CONTROL WIRES TO/FROM LANDSCAPE TIMER/CONTROLLER FOR FLOW MONITORING
- QUICK COUPLE FOR STEEPLE CHASE PIT FILL TRACK SURFACING INSTALL
- QUICK COUPLE FOR SYNTHETIC TURF INSTALL
- VALVE BOX FOR TRACK SURFACING INSTALL SEE CIVIL SHEET C501 FOR FLOW PIPING

5
TF233
5
TF233
2
TF232

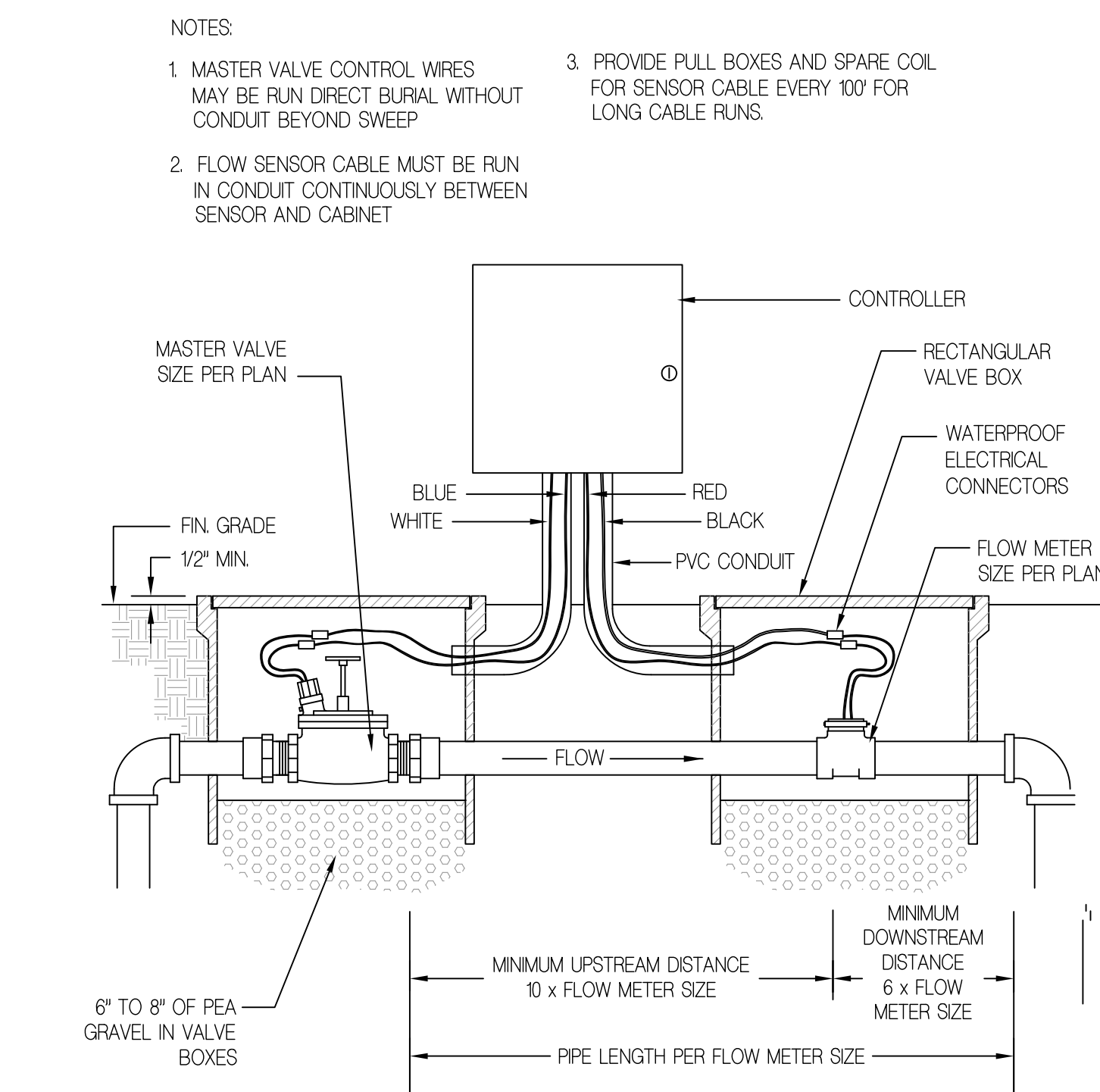


TRENCHING DETAILS

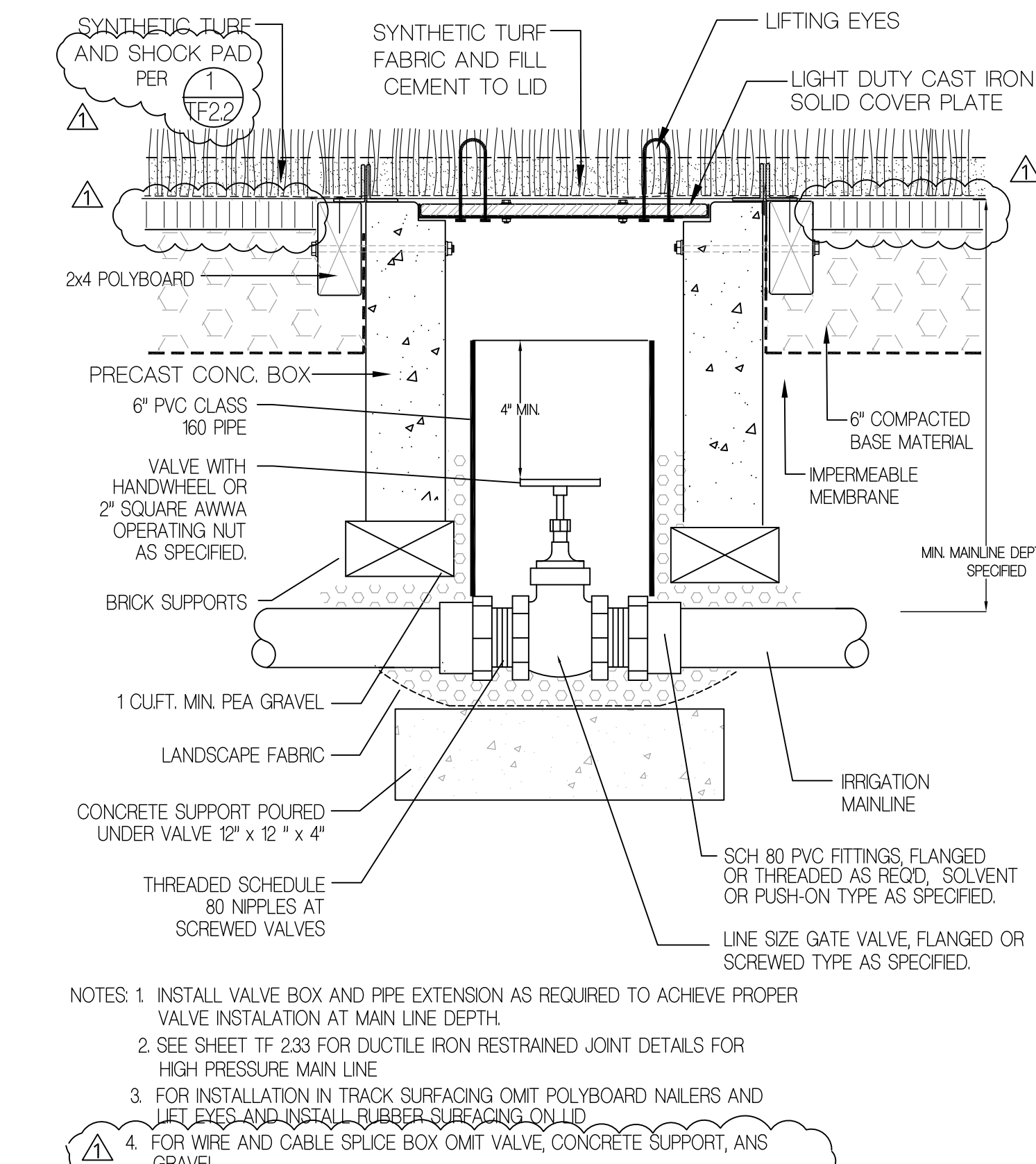


FIELD COOL-DOWN HEAD AND QUICK COUPLER

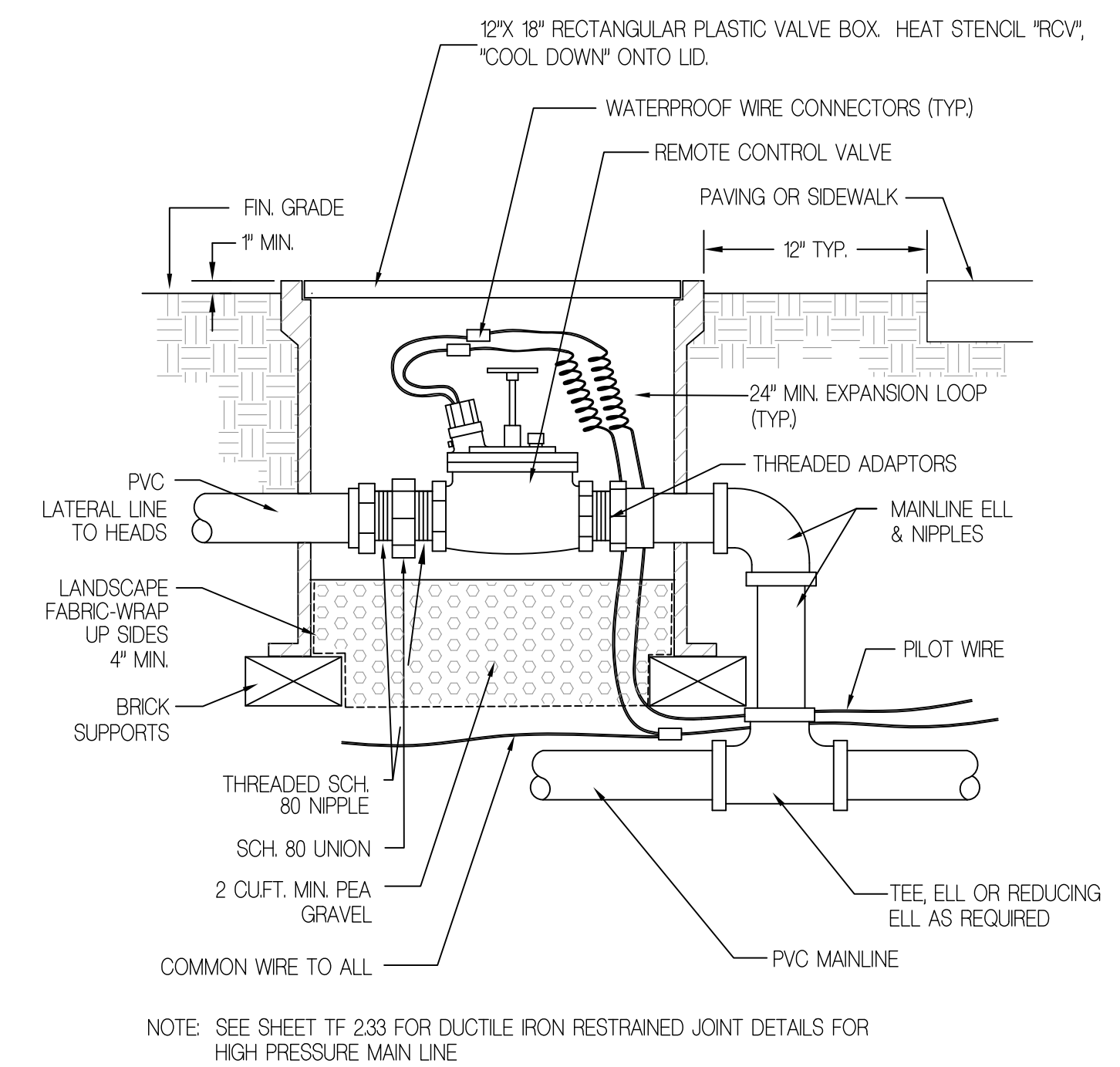
SYMB.	DESCRIPTION	MANUFACTURER & MODEL	NOTES	DET.
	GEAR DRIVEN COOL-DOWN ROTARY HEAD IN SYNTHETIC TURF SPECIALTY VAULT	HUNTER STG-900-83 ADJUSTABLE ARC W/HUNTER STK-1 REMOTE VALVE VAULT	125" RADIUS, 92 GPM AT 120 PSI WITH HUNTER TURF VAULT AND 473900 RUBBER COVER	5 / TF232
NOT SHOWN	HIGH STRENGTH SWING JOINTS - FOR HEADS	HUNTER ST2008-VA SWING JOINT W/ 238800 & 239300 FITTINGS		5 / TF232
NOT SHOWN	HIGH STRENGTH SWING JOINTS - FOR QCVS	USACO G08S-400		5 / TF232
	BRONZE BALL VALVE	NBCO T-585-70 1-1/2" OR EQUAL FULL PORT		
	NEW COOL-DOWN CONTROL VALVE	SUPERIOR 950	2-1/2"	3 / TF232 2 / TF233
	NEW 24 VAC SOLENOID CONTROL VALVE	SUPERIOR 950	2"	3 / TF232
	QUICK COUPLER VALVE	RAINBRD 44		5 / TF232
	EXISTING TRANSITE MAIN LINE - SIZE NOTED		SEE NOTE 1	
	HIGH PRESSURE MAINLINE	PVC CLASS 315 W/ DUCTILE IRON JOINTS		4 / TF232 2 / TF233
	LOW PRESSURE MAINLINE	PVC SCHEDULE 40 W/ SOLVENT WELD OR GASKETED JOINTS - STANDARD THRUST BLOCKS		4 / TF232
	NON-PRESSURE LATERAL LINE	PVC SCHEDULE 40 W/ SOLVENT WELD JOINTS		4 / TF232
	BRASS GATE VALVE	NBCO T-113	LINE SIZE	2 / TF232
	COOL-DOWN CONTROLLER	*COACHES SWITCH* BY IMPERIAL TECHNICAL SERVICES ICAG-TS2-6-1 M/V/PSR - PROVIDE WITH ITS FLOW-GUARD, FLOW-SENSOR AND M.V.	PEDESTAL MOUNT, KEY CONTROLLED 4 STATION SECURE INTERVAL TIMER	3 / TF233
	LANDSCAPE CONTROLLER	RAINMASTER EAGLE RME-24-EG-SPEED 1/2	IN SPEED PEDESTAL - PROVIDE WITH 5 YEAR 1-CENTRAL CONTRACT	4 / TF233
	MASTER VALVE	SUPERIOR NORMALLY CLOSED		1 / TF232
	FLOW SENSOR	IRITROL FS-B50 1-1/2" AND FS-B200 2" AS NOTED	USE PAGE CABLE P-782-D SENSOR CABLE	1 / TF232
	IRRIGATION ONLY WATER METER	SEE SHEET C-501		C-501
	IRRIGATION BACKFLOW PREVENTER	SEE SHEET C-501		C-501
	IRRIGATION / COOL-DOWN BOOSTER PUMP	BARRETT ENGINEERED PUMPS SKD W/ ENCLOSURE B0200-55-3 W/ VFD 15 HP - 480 VAC 3 PHASE VFD DUAL PRESSURE SET POINTS 1/2" HIGH PRESSURE TO PSI - 1/2" LOW PRESSURE 80 PSI		1 / TF233
NOT ILLUSTRATED	CONTROL WIRE AND SENSOR COMMUNICATION CABLE	DIRECT BURIAL CONTROL WIRE 14 GA - SENSOR COMMUNICATION PAGE P-782-D CABLE	CONTROL WIRE DIRECT BURIAL IN LANDSCAPING ONLY - COMM CABLE ALWAYS IN CONDUIT. ALL CABLE & WIRE ALWAYS SLEEVED UNDER PAVING & TURF SIZE NOTED ON PLAN	4 / TF232
	CONTROL & SENSOR WIRE SLEEVE	PVC SCH 40 GRAY OR WHITE	SIZE NOTED ON PLAN	4 / TF232
	PIPE SLEEVE - LATERAL LINE	RIGID PVC SCH 40	SIZE NOTED ON PLAN	4 / TF232
	PIPE SLEEVE - MAIN LINE	RIGID PVC SCH 40	SIZE NOTED ON PLAN	4 / TF232



FLOW SENSOR - MASTER VALVE



VALVE & BOX IN TRACK OR TURF



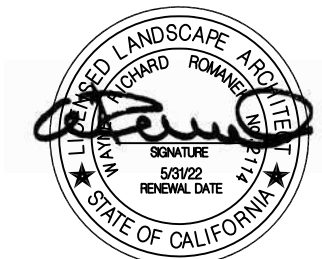
CONTROL VALVE

REVISIONS

1 ADDENDUM 1 02/01/2022

THIS APPROVAL IS FOR ITEMS WITHIN CLOUDED AREAS ONLY. FOR OTHER INFORMATION NOT CONTAINED WITHIN CLOUDED AREAS, REFER TO ORIGINAL DSA APPROVED PLANS.
DO NOT USE THESE PLANS AS SUBSTITUTE FOR THE ORIGINAL DSA APPROVED PLANS

CONSULTANT
CARTER, ROMANEK
Landscape Architects, Inc.
28720 Roadside Drive, Suite 100
Agoura Hills, California 91301
(818)477-9800



NORWALK LA MIRADA UNIFIED SCHOOL DISTRICT
LA MIRADA HIGH SCHOOL NEW FOOTBALL STADIUM PROJECT
13520 ADELEA DRIVE, LA MIRADA, CA 90638

DSA # 03-120551

NAC NO. 161-19015
DATE 02/01/2022

DSA BACKCHECK
SUBMISSION

FIELD COOLING
AND
IRRIGATION
UPGRADE PLAN

TF 2.32